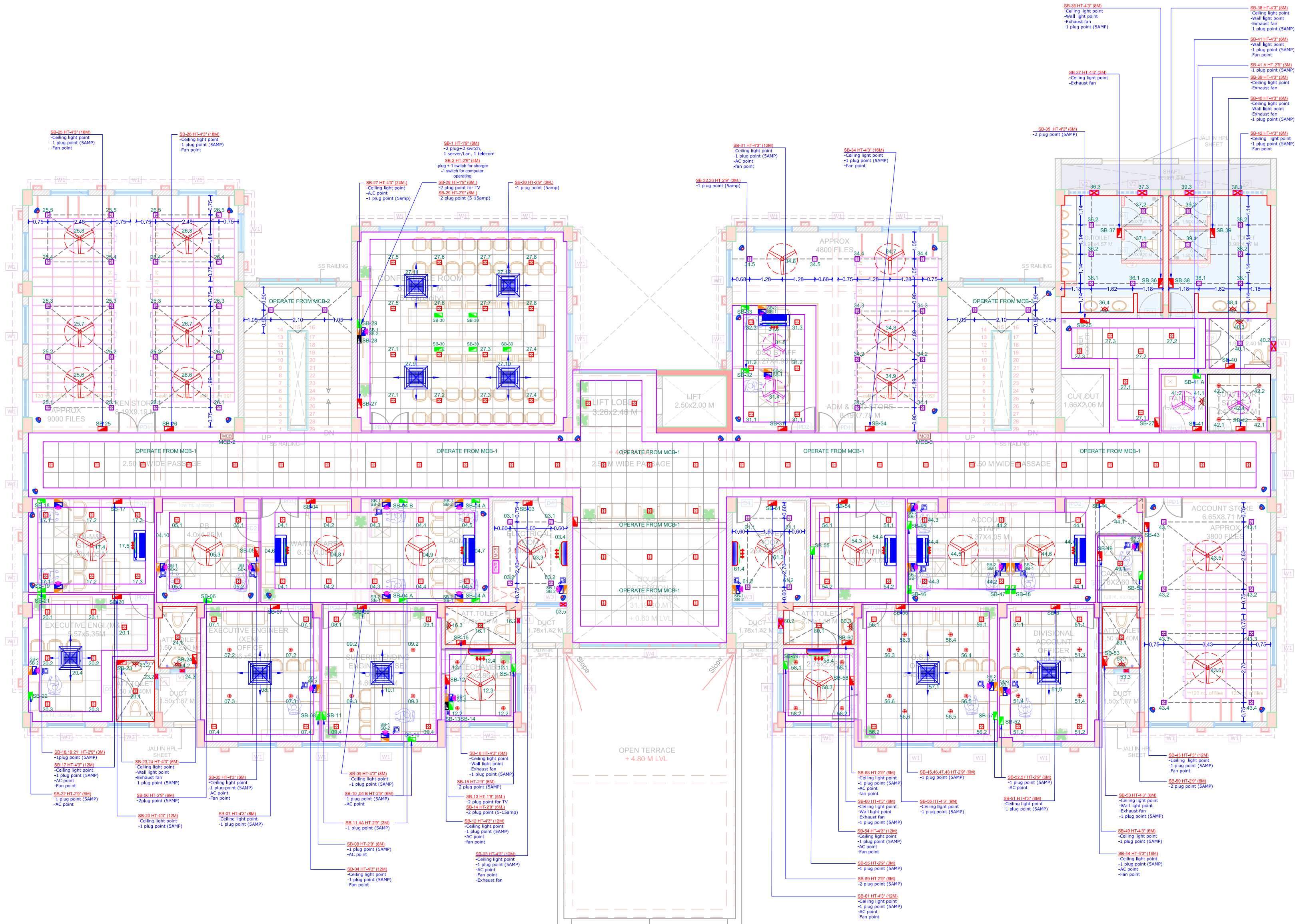


FIRST FLOOR ELECTRICAL PLAN

LEGENDS:

	Switch Board Height 4'-3" (light & fan operating & require plug point.)		CCTV
	Switch Board Height 2'-9" (plug + 1 switch for charger light & fan operating.)		PROJECTOR POINT
	Switch Board Height 2'-9" (printer point)		SPLIT AC
	Switch Board Height 2'-9" (1 plug for -computer, 1 server, 1 telecom)		ONE WAY CASSETTE AC
	Switch Board Height 1'-9" (2 Plug point (Samp-cable point))		CASSETTE AC
	Switch Board Height 1'-9" (2plug point 5+15amp)for tv		CHANDELER POINT
	M.C.B. 6"	NOTE: eg.(6M) M = MODULE	
	CCTV CONTROL		
	18W CEILING LIGHT POINT		
	10-12W CEILING LIGHT POINT		
	SURFACE LIGHT POINT		
	WALL LIGHT POINT		
	WALL FAN POINT		
	TELECOM		
	EXHAUST FAN POINT		
	FAN POINT (84)		
	FAN POINT (83)		



NO.	DESCRIPTION	DATE	PRINT	SIGN.
R0			B C E	
REVISION				

SIGN & STAMP:-

CLIENT : G.I.D.C. VADODARA

PROJECT TITLE :  
G.I.D.C. OFFICE BUILDING  
AT VADODARA

STAGE	DATE	SCALE
CONCEPTUAL	02-03-2026	N.T.S.

DRAWING TITLE :  
FIRST FLOOR ELECTRICAL PLAN  
OPTION-4

ARCHITECTS:  
  
**SARJAN ARCHITECTS**  
& PROJECT CONSULTANTS  
51, River Palace- A, Opp. Old Civil Court, Nanpura, Surat- 395001.  
E-Mail: sarjanarchi.pc@gmail.com Web: www.sarjanarchitects.com  
Contact: +91-261-2476778/ 9879604444